

ASERA

ASSOCIATION OF SEVERN ESTUARY RELEVANT AUTHORITIES

**Severn Estuary
European Marine Site**

Management Scheme

September 2004

SEVERN ESTUARY EUROPEAN MARINE SITE

Management Scheme September 2004

Severn Estuary European Marine Site
Management Scheme
September 2004

Compiled by Steve Knowles
on behalf of The Association of Severn Estuary Relevant Authorities (ASERA)
web: <http://www.severnestuary.net/asera>

Acknowledgements

The production of this management scheme has involved extensive consultation with relevant and competent authorities, members of the Advisory Group and other interests. The support received and time given by particular officer and members of these organisations was fundamental to the production of this document and is gratefully appreciated.

SEVERN ESTUARY EUROPEAN MARINE SITE
Management Scheme September 2004

Contents

1	Introduction	1
1.1	Severn Estuary designations	1
1.2	Management schemes and ASERA.....	1
1.3	The Foundation Document	1
1.4	Existing plans	1
1.5	Ongoing process.....	1
2	Purpose of this management scheme.....	3
2.1	Management Scheme Principles.....	3
3	Legislative background.....	4
4	Site Description and Reasons for Designation	5
5	Role of Conservation Objectives and Advice on Operations	6
6	Assessment of activities.....	7
6.1	The Management Scheme Process	7
6.2	Assessment of Activities	7
6.3	Activities identified as likely to be causing deterioration or significant disturbance	8
6.4	Activities identified as having an unknown effect.....	8
6.5	Activities identified as not having the potential to cause deterioration or significant disturbance ...	9
6.6	Plans and Projects.....	9
6.7	Action Plans	9
7	Implementation of Management Scheme.....	13
7.1	How the management scheme is going to be implemented.....	13
7.2	Who is going to do what.....	13
7.4	Reporting on and updating the Action Plan.....	13
7.5	Reporting on changes to management practices/location of activities.....	13
7.6	Changes to plans/initiatives used to construct the management scheme.....	14
7.7	Additional activities or plans/projects.....	14
7.8	Actions for an ASERA officer	14
8	Action Plan.....	16

SEVERN ESTUARY EUROPEAN MARINE SITE

Management Scheme September 2004

Acronyms

Glossary

References

Appendices

Appendix 1 - ASERA members and ASERA constitution

Appendix 2 - Table of links to documents/policies/plans used in constructing the management scheme and who is responsible for maintaining them

Appendix 3 – Record of activities (i) identified as not having the potential to cause deterioration or significant disturbance to the features of the site or (ii) those now considered to be plans and projects

Appendix 4 – Responsibilities of relevant and competent authorities and areas of jurisdiction of relevant authorities

Appendix 5 – Membership and terms of reference for the Severn Estuary European marine site Advisory Group

Appendix 6 – Main plans and initiatives in and around the Severn Estuary

Appendix 7 – Issues still to be considered in the management scheme

Appendix 8 – Other Special Protection Areas and Special Areas of Conservation in the UK

SEVERN ESTUARY EUROPEAN MARINE SITE

Management Scheme September 2004

Executive Summary

1. Severn Estuary designations

The Severn Estuary supports populations of wild birds that are of European importance, and in recognition of this the Estuary was classified as a Special Protection Area (SPA) in 1995. The Severn Estuary is also a Ramsar site and a possible Special Area of Conservation (pSAC). For further information on the site description and reasons for designation, see chapter 4 of the management scheme.

2. Management schemes and ASERA

The relevant authorities, those organisations with powers or functions which have, or could have, an impact on marine SPAs and SACs, have a statutory duty to ensure that they carry out their functions to comply with the Habitats Directive. The UK Government considers that, particularly in the marine environment, a management scheme is the most appropriate mechanism for relevant authorities to deliver the requirements of the Habitats Directive to conserve the species and habitats of the designated areas. Due to the large size and complexity of the Severn Estuary site, the relevant authorities recognised that a co-ordinated inter-agency approach would be the most practicable and economic method to produce a management scheme for the Severn Estuary. In 1998 they formed the Association of Severn Estuary Relevant Authorities (ASERA) to achieve this objective. In line with Government recommendations, ASERA helped to establish an Advisory Group of users and interest groups from around the Estuary.

2.1 Activities, plans and projects

The management scheme has been produced to set the framework within which ‘**activities**’ (managed by competent or relevant authorities on an **ongoing basis**) will be managed in ways compatible with the conservation objectives of the site. **Plans and projects** (generally any action which requires an application to be made for specific statutory consent, authorisation, license or other permission) are dealt with separately under the Conservation (Natural Habitats &c.) Regulations 1994, more commonly known as the Habitats Regulations, and therefore in general, are not part of this management scheme.

2.2 Management scheme and individual relevant authorities

It is Government policy that relevant authorities are responsible for monitoring enforcement of those measures under the management scheme which fall under their functions. It is therefore the responsibility of each relevant authority to implement this management scheme.

It should be noted that, conserving the species and habitats of the Special Protection Area (SPA) and possible Special Area of Conservation (pSAC) forms only one of the many functions of each of the relevant authorities, all of which exist primarily for other purposes, and who act under other legislation. However, all the ASERA member relevant authorities are committed to the conservation of the designated species and habitats and to the successful implementation of the management scheme.

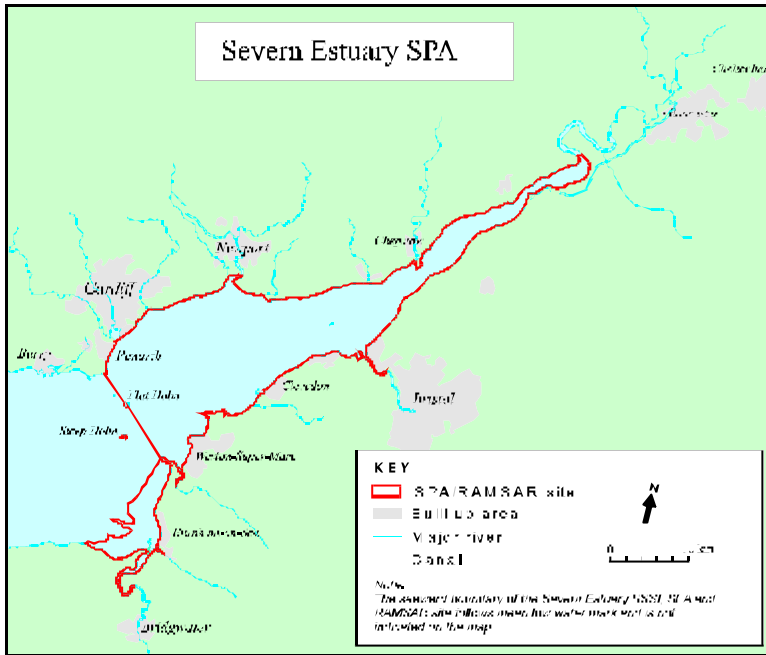
3. Purpose of this management scheme

<p>To be a management scheme for the Severn Estuary European marine site, under which the functions of the relevant authorities shall be exercised so as to secure in relation to the site, compliance with the requirements of the Habitats and Birds Directives.</p>
--

Based on Regulation 34 (1) of the Conservation (Natural Habitats & c.) Regulations 1994 and ASERA constitution

SEVERN ESTUARY EUROPEAN MARINE SITE

Management Scheme September 2004



This management scheme for the Severn Estuary European marine site is a management scheme for the SPA in the context of the ongoing pSAC and Ramsar issues. Should the pSAC be submitted to the European Commission as a cSAC at some point in the future, or should there be a need to include the Ramsar designation within the scheme, ASERA will decide on how best to address the management of the additional nature conservation features and sub-features.

The SPA includes that land within local authority jurisdiction which is above Mean Low Water (Due to the dynamic nature of the estuarine environment in which sediments and sandbanks are constantly moving, mean low water will move.).

This management scheme sets the framework within which activities will be managed, either voluntarily or through regulation, in ways compatible with the achievement of the nature conservation interests. The management scheme does not set out to be a static document, but an ongoing process that aids decision-making and continually evolves to take account of changing information on activities, issues, management practices and legal obligations.

4. The management scheme process

The development of the management scheme was based around a series of three sector group workshops. Firstly, relevant authorities identified what activities they were responsible for around the Estuary. They then provided information on where the activities occurred and how they were managed. The countryside agencies reviewed all the completed activity forms and assessed, from their perspective, the potential of an activity to cause deterioration or significant disturbance to the site. This assessment was based upon the sensitivity and exposure of the designated features and sub-features to the different activities in the relevant authority areas of jurisdiction. It should be noted however, that this assessment was based on information provided by relevant authorities at the time. In some instances this information was incomplete and in others there was no information provided at all. In these circumstances the assessment was based on the countryside agencies' best knowledge only. It may be that in the light of further information, certain activities in certain locations may be assessed differently. Finally, management actions were agreed to address the impacts of the specific activities that have the potential to cause deterioration or significant disturbance to the site.

4.1 Activities identified as likely to cause deterioration or significant disturbance

The assessment identified two broad categories of activity, which at their current levels are thought likely to be causing deterioration or significant disturbance to features or sub-features on some areas of the site, namely;

- a. **Land-based recreation, and**
- b. **Water-based recreation.**

The effects of these activities are not occurring throughout the Estuary, but are thought to be in certain localised areas. Elsewhere in the Estuary, the effects of these activities, if any, may be unknown at present; i.e. generally land and water based recreation is assessed as F3 (unknown effects) and sometimes F4 (no known effect) across most of the estuary, rather than F5 (known effect).

SEVERN ESTUARY EUROPEAN MARINE SITE

Management Scheme September 2004

The potential impacts from land and water based recreation are disturbance to feeding, roosting and nesting birds, the potential impact of associated litter and pollution and the potential loss of habitat from recreational facilities. Access and related disturbance is the main concern and there is the need to identify more specifically where the main areas of recreational activity are around the Estuary in relation to the features and sub-features of interest. A topic group will be set up to investigate this which will include appropriate relevant authorities and members of the Advisory Group. Currently, the area under the jurisdiction of North Somerset Council, Somerset Council, Sedgemoor District Council and West Somerset District Council is considered to be a popular area for land and water based recreation and further investigation into the extent and impact of recreational activities will be concentrated in these areas. It is possible that the collection of further information and better understanding of these activities in the future may demonstrate that they are not causing deterioration or significant disturbance to the site.

4.2 Activities having an unknown effect

The assessment identified the following activities as having a known mechanism to cause deterioration or significant disturbance to the features of the SPA. However, there is insufficient current information at present to determine whether or not they are actually causing deterioration or significant disturbance or not i.e. they are having an unknown effect.

- c. *Angling (recreational),*
- d. *Boat repairs (recreational),*
- e. *Collection of scientific data,*
- f. *Contamination through historic industry (Lower Axe and Lower Brue IDBs only),*
- g. *Grazing,*
- h. *Highways discharge ,and*
- i. *Managing unauthorised waste.*

These activities are not necessarily affecting the whole site. The timing, intensity and nature of these activities varies across the site and consequently any possible deterioration or disturbance caused by them will also vary across the site. Gathering of further information relating to these activities will help inform judgements as to their likely effects. In addition, guidance on best practice for carrying out and managing some of these activities may help to mitigate any effects they may be having.

The above activities with a known mechanism to cause deterioration or significant disturbance, but where lack of information means their effects are unknown, together with activities that have been judged as likely to be having a significant effect on the site (a – i), are jointly referred to in this management scheme as activities having the 'potential' to cause deterioration or disturbance to the features and sub-features of the site.

4.3 Activities identified as not having the potential to cause deterioration or significant disturbance

Based on current best available information, all other activities are currently considered not to be causing deterioration or significant disturbance as there is no known mechanism for them to do so. These activities will require no further action subject to the continuation of current management. Where there is a change in management, or in light of further information, the impact of activities should be re-assessed.

4.4 Plans and projects

Certain plans and projects have been identified as being of an ongoing and repetitive nature. ASERA will facilitate the production of guidance notes for such plans and projects where it is felt that this will be helpful to assist relevant authorities. Currently, it is proposed to produce guidance for the following:

- Archaeology (studies and protection)
- Events and festivals
- Repetitive maintenance activities
- Managing unauthorised waste, and
- Collection of scientific data.

SEVERN ESTUARY EUROPEAN MARINE SITE

Management Scheme September 2004

All plans and projects identified during the management scheme process will require relevant authorities to ensure that they apply Regulations 48-53 of the Habitats Regulations.

4.5 Action Plan

An Action Plan was produced following further sector group workshops to address those activities identified with the potential to cause deterioration or significant disturbance to the features of the SPA. The Action Plan details specific actions for relevant authorities and an ASERA officer. It provides a consistent approach for addressing the activities identified above. It takes into account that different management actions may be adopted by different relevant authorities at some locations. The production of guidance notes for some ongoing activities and plans and projects will be an aid to achieving this consistent approach.

5. Implementation of management scheme

5.1 Relevant authorities - It is the responsibility of each relevant authority to ensure it implements the management scheme as a whole and any actions identified in the Action Plan. The individual responsible relevant authority, or group of relevant authorities, have identified and will implement certain actions to address the potential effects of those activities indicated in the Action Plan.

In certain cases when more than one relevant authority is responsible for managing an activity with a known or unknown effect on the site, or where there are gaps in management, relevant authorities have agreed to work co-operatively to address the issues. A partnership approach will be achieved by setting up topic groups, and if appropriate, Advisory Group members or other relevant organisations may be invited to participate. Discussions will then take place to determine further possible management actions and solutions.

During the implementation of the management scheme more specific management actions may be identified by individual or groups of relevant authorities in order to address certain activities. These management actions may derive from existing procedures/initiatives or may be specifically written for the management scheme.

5.2 ASERA - The process undertaken by ASERA has helped considerably in raising relevant authority awareness of their responsibilities in relation to the Habitats Regulations. It is anticipated that ASERA will continue to enable relevant authorities to discharge their statutory duties in relation to the nature conservation designations on the site, in the most efficient and cost effective manner, by helping facilitate the implementation of the management scheme as it has done in its development.

5.3 Reporting on the management scheme

It is proposed that the ASERA Management Group meet at the Joint Estuary Groups bi-annual meetings organised by the Severn Estuary Partnership and that relevant authorities with specific actions report on the progress of these actions at these meetings. Relevant authorities will also be responsible for reporting on the following:

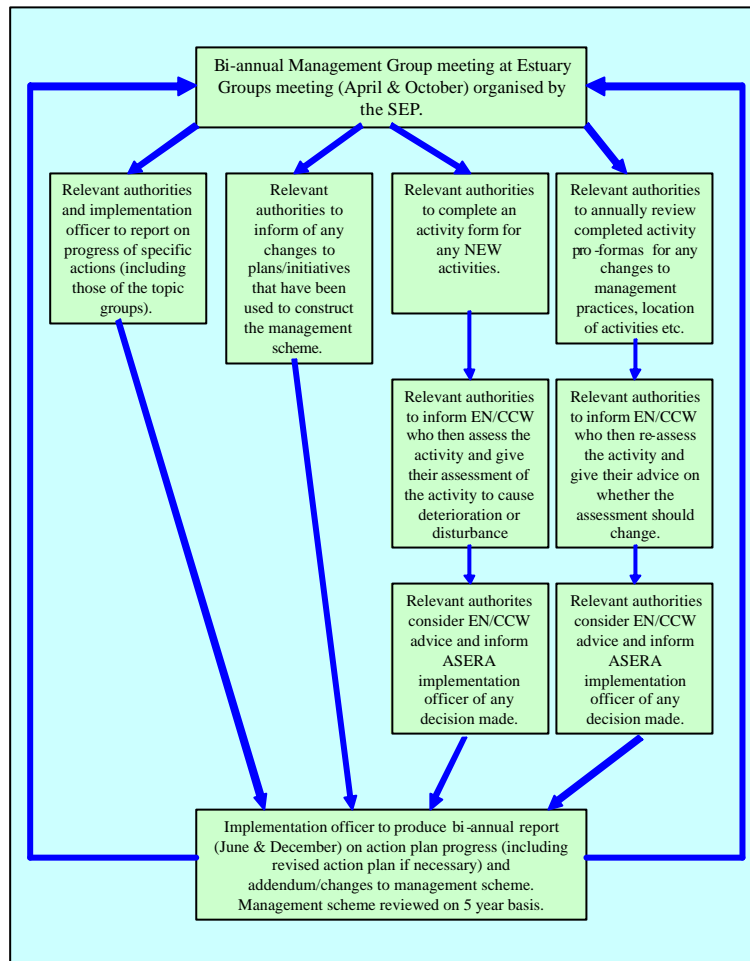
- Changes to management practices/location of activities,
- Changes to plans/initiatives used to construct the management scheme, and
- Additional/new activities or plans and projects.

5.4 Actions for an ASERA officer

The Action Plan includes actions to be undertaken by a management scheme implementation officer. These include co-ordinating the production of framework guidance for certain activities and plans and projects determined by the relevant authorities, servicing the ASERA Management Group, Advisory Group and topic groups, and generally raising awareness in users of the importance of the site and their possible impact on site features.

The following flowchart outlines the implementation process that will be followed by ASERA members.

SEVERN ESTUARY EUROPEAN MARINE SITE Management Scheme September 2004



6. Action Plans

The Action Plan provides the mechanism for relevant authorities to address the following:

- Activities identified as likely to be causing deterioration or significant disturbance to the site;
- Activities, the effects of which are unknown (i.e. there is insufficient information available at present to determine whether they are actually causing deterioration or significant disturbance to the site or not), and
- Certain plans and projects of an ongoing and repetitive nature for which ASERA will facilitate the production of guidance notes.

Wherever possible, the actions identified will be based on the voluntary approach in the first instance, involving widespread co-operation and consensus between organisations. In regard to Principle 6 of the Foundation Document, additional bye-laws will only be introduced into the management scheme when voluntary approaches are insufficient, all other options have been considered, and they are the only effective solution.

The production of this management scheme has involved extensive consultation with relevant and competent authorities, members of the Advisory Group and other interests. The support received by these organisations and individuals was fundamental to the production of this document.

Separate summaries for printing have been produced for the different sector groups with the complete Action Plan and appropriate section of the Action Plan attached. For the full electronic Action Plan, refer to section 8 of the management scheme.

This summary has been produced bi-lingually for the final management scheme.

SEVERN ESTUARY EUROPEAN MARINE SITE

Management Scheme September 2004

1 Introduction

1.1 Severn Estuary designations

The Severn Estuary supports populations of wild birds that are of European importance, and in recognition of this the Estuary was classified as a Special Protection Area (SPA) in 1995. The Severn Estuary is also a Ramsar site and a possible Special Area of Conservation (pSAC).

1.2 Management schemes and ASERA

The relevant authorities, those organisations with powers or functions which have, or could have, an impact on marine SPAs and SACs, have a statutory duty to ensure that they carry out their functions to comply with the Habitats Directive. The UK Government considers that, particularly in the marine environment, a management scheme is the most appropriate mechanism for relevant authorities to deliver the requirements of the Habitats Directive to conserve the species and habitats of the designated areas. Due to the large size and complexity of the Severn Estuary site, the relevant authorities recognised that a co-ordinated inter-agency approach would be the most practicable and economic method to produce a management scheme for the Severn Estuary. In 1998 they formed the Association of Severn Estuary Relevant Authorities (ASERA) to achieve this objective.

It is Government policy that relevant authorities are responsible for monitoring enforcement of those measures under the management scheme which fall under their functions. It is therefore the responsibility of each relevant authority to implement this management scheme.

Further information on the role, structure, membership and areas of jurisdiction of member relevant authorities of ASERA can be found in the [Foundation Document for the Management Scheme](#) [*Word 97 - to see link: right click underlined text, hyperlink, open in new window*]. The membership of ASERA when this management scheme was last updated is shown in [Appendix 1](#).

1.3 The Foundation Document

A major first step in the production of this management scheme was preparation of the Foundation Document for the Management Scheme (ASERA 2003). This describes the basic information and principles upon which the management scheme is founded.

1.4 Existing plans

Government guidance (DETR/Welsh Office 1998. European marine sites in England & Wales. A guide to the Conservation Regulations 1994 and to the preparation and application of management schemes) advocates the use of existing plans to help construct management schemes. Consequently, this document will use and link to, other existing documents, especially the Foundation Document for the Management Scheme and the Regulation 33 Advice (EN/CCW 2004) which advises relevant authorities as to the conservation objectives of the site.

1.5 Ongoing process

This management scheme is the only one produced for the Severn Estuary European marine site. It does not set out to be a static document, but is an ongoing process that aids decision-making and will need to evolve to take account of changing information on activities, issues, management practices and legal obligations. This will be achieved by delivering the scheme electronically and using website technology to signpost and link to existing plans, initiatives and other relevant documents. It is the responsibility of relevant authorities who have prepared the stated plans/initiatives to inform the ASERA office of any material changes. In this way, the management scheme may be maintained as an up to date and living document.

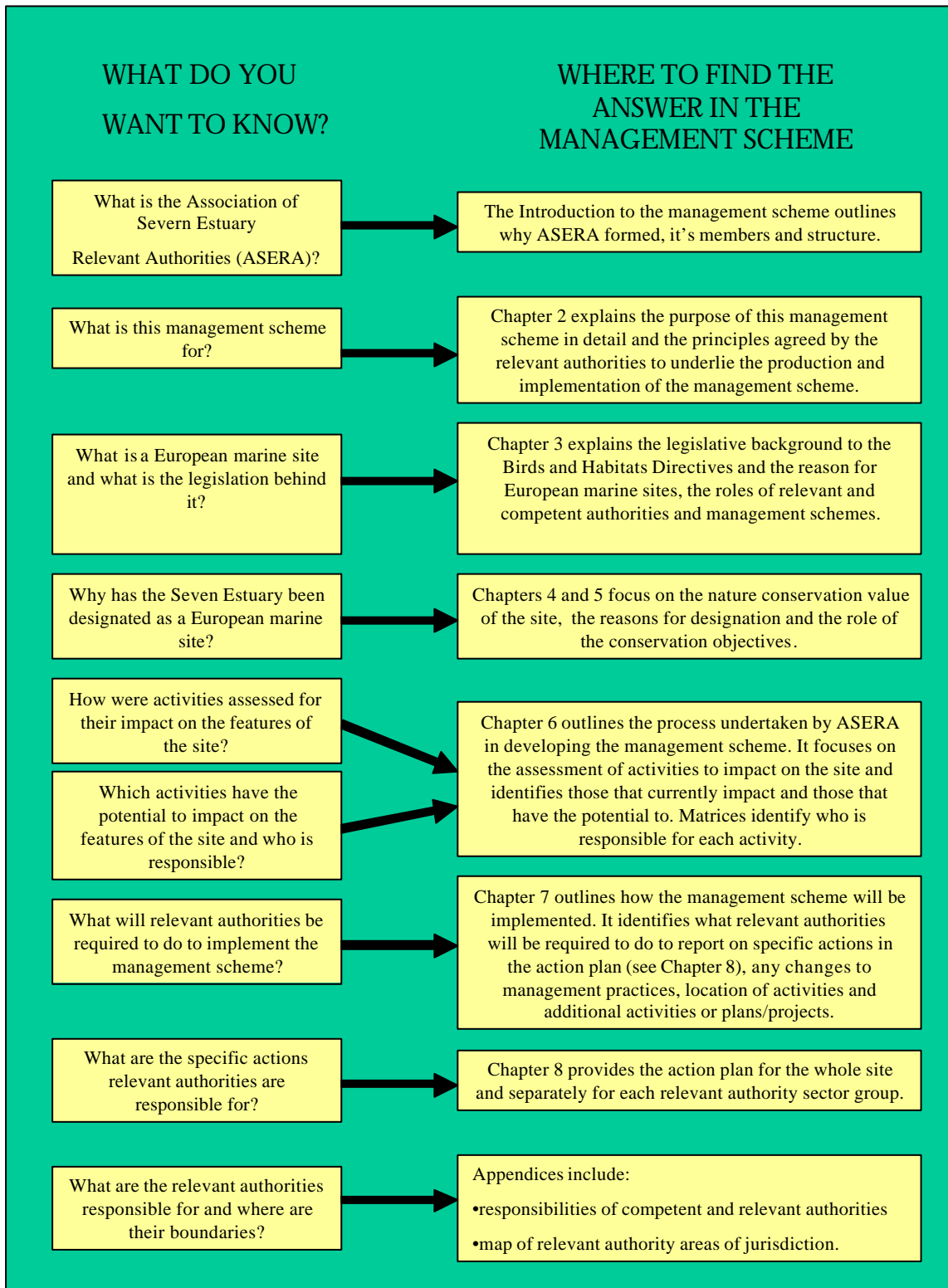
The layout of the management scheme is shown in Figure 1.

SEVERN ESTUARY EUROPEAN MARINE SITE

Management Scheme September 2004

The production of this management scheme has involved extensive consultation with relevant and competent authorities, members of the Advisory Group and other interests. The support received by these organisations and individuals was fundamental to the production of this document.

Figure 1 – Structure of Management Scheme



SEVERN ESTUARY EUROPEAN MARINE SITE

Management Scheme September 2004

2 Purpose of this management scheme

To be a management scheme for the Severn Estuary European marine site, under which the functions of the relevant authorities shall be exercised so as to secure in relation to the site, compliance with the requirements of the Habitats and Birds Directives.

Based on Regulation 34 (1) of the Conservation (Natural Habitats & c.) Regulations 1994 and ASERA constitution

This management scheme for the Severn Estuary European marine site is a management scheme for the [SPA](#) [Word 97 - to see link: right click underlined text, hyperlink, open in new window], in the context of the ongoing pSAC and Ramsar issues. Should the pSAC be submitted to the European Commission as a cSAC at some point in the future, or should there be a need to include the Ramsar designation within the scheme, ASERA will decide on how best to address the management of the additional nature conservation features and sub-features.

This management scheme sets the framework within which activities will be managed, either voluntarily or through regulation, in ways compatible with the achievement of the nature conservation interests. The management scheme does not set out to be a static document, but an ongoing process that aids decision-making and continually evolves to take account of changing information on issues, management practices and legal obligations. It does not aim to exclude human activities from the site, but rather to ensure that they are undertaken in ways that do not threaten the nature conservation interests. It is hoped that recognition of damaging practices will lead to a change for the long term sustainability of the site, which will fulfil the requirements of the Habitats Regulations, but also allow the area to be a resource to industry and recreation for future generations. Further information on the purpose of the management scheme can be found in the [Foundation Document for the Management Scheme](#) [to see link: right click underlined text, hyperlink, open in new window].

2.1 Management Scheme Principles

To help ensure that all relevant authorities are working to the same goal, the following six key principles were used in the production of the management scheme for the Severn Estuary European marine site.

- Principle 1 – Sustainable Development
- Principle 2 – Precautionary Principle
- Principle 3 – Estuary wide approach
- Principle 4 – Links to existing management
- Principle 5 – Changes to management of an activity
- Principle 6 – Regulatory use of bye-laws

The consultation on this document has led to a revised **Principle 6 – Regulatory use of bye-laws:**

Additional bye-laws will only be introduced into the management scheme when voluntary approaches are insufficient, all other options have been considered, and they are the only effective solution.

Further information on the management scheme principles can be found in the [Foundation Document for the Management Scheme](#) [Word 97 - to see link: right click underlined text, hyperlink, open in new window].

SEVERN ESTUARY EUROPEAN MARINE SITE

Management Scheme September 2004

3 Legislative background

The Birds and Habitats Directives are transposed into UK legislation by 'The Conservation (Natural Habitats, &c) Regulations 1994'. It is these Regulations that state relevant authorities may set up a management scheme.

The legislative background to:

- Council Directive 92/43/EEC on the conservation of natural habitats and of wild fauna and flora, commonly known as the **Habitats Directive**,
- Council Directive 79/409/EEC on the conservation of wild birds, commonly known as the **Birds Directive**,
- The Convention on Wetlands of International Importance (Ramsar sites),
- The Conservation (Natural Habitats, &c) Regulations 1994, commonly known as the **Habitats Regulations**, and
- The role of competent and relevant authorities and countryside agencies

can be found in the [Foundation Document for the Management Scheme](#) *[Word 97 - to see link: right click underlined text, hyperlink, open in new window]*.

It should be noted that, conserving the species and habitats of the Special Protection Area (SPA) and possible Special Area of Conservation (pSAC) forms only one of the many functions of each of the relevant authorities, all of which exist primarily for other purposes, and who act under other legislation. However, all the ASERA member relevant authorities are committed to the conservation of the designated species and habitats and to the successful implementation of the management scheme.

SEVERN ESTUARY EUROPEAN MARINE SITE

Management Scheme September 2004

4 Site Description and Reasons for Designation

The Severn Estuary Special Protection Area qualifies under Article 4.1 of Council Directive 79/409/EEC on the conservation of wild birds, commonly known as the Birds Directive, by supporting:

- Internationally important populations of regularly occurring Annex 1 species.

It also qualifies under Article 4.2 of the Birds Directive in that it supports:

- Internationally important populations of regularly occurring migratory species, and
- An internationally important assemblage of waterfowl.

A full description of the Severn Estuary European marine site and the reasons for its designation can be found in sections 1 & 2 of the countryside agencies [consultation draft Regulation 33 Advice](#) *[Word 97 - to see link: right click underlined text, hyperlink, open in new window]* (EN/CCW February 2004).

SEVERN ESTUARY EUROPEAN MARINE SITE

Management Scheme September 2004

5. Role of Conservation Objectives and Advice on Operations

The role of conservation objectives is to define the nature conservation aspirations for the features of interest, thus representing the aims and requirements of the Habitats and Birds Directives in relation to that site. The conservation objectives for the Severn Estuary Special Protection Area (European marine site) represent English Nature and the Countryside Council for Wales' judgement of the appropriate contribution of the site to ensuring the survival and reproduction of the species concerned in their area of distribution. They are intended to guide relevant and other competent authorities in the exercise of their functions to comply with the requirements of the Habitats and Birds Directives.

The advice on operations provides the basis for discussion about the nature and extent of the operations taking place within or close to the site and which may have an impact on its interest features. The advice should be used to help identify the extent to which existing use and management of the site are, or can be made, consistent with the achievement of the conservation objectives and thereby focus the attention of relevant authorities on factors affecting or likely to affect the interest features of the site.

A full description of the role of the conservation objectives and advice on operations for the Severn Estuary European marine site can be found in sections 4 and 5 of the countryside agencies [consultation draft Regulation 33 Advice](#) [*Word 97 - to see link: right click underlined text, hyperlink, open in new window*] (EN/CCW February 2004).

SEVERN ESTUARY EUROPEAN MARINE SITE Management Scheme September 2004

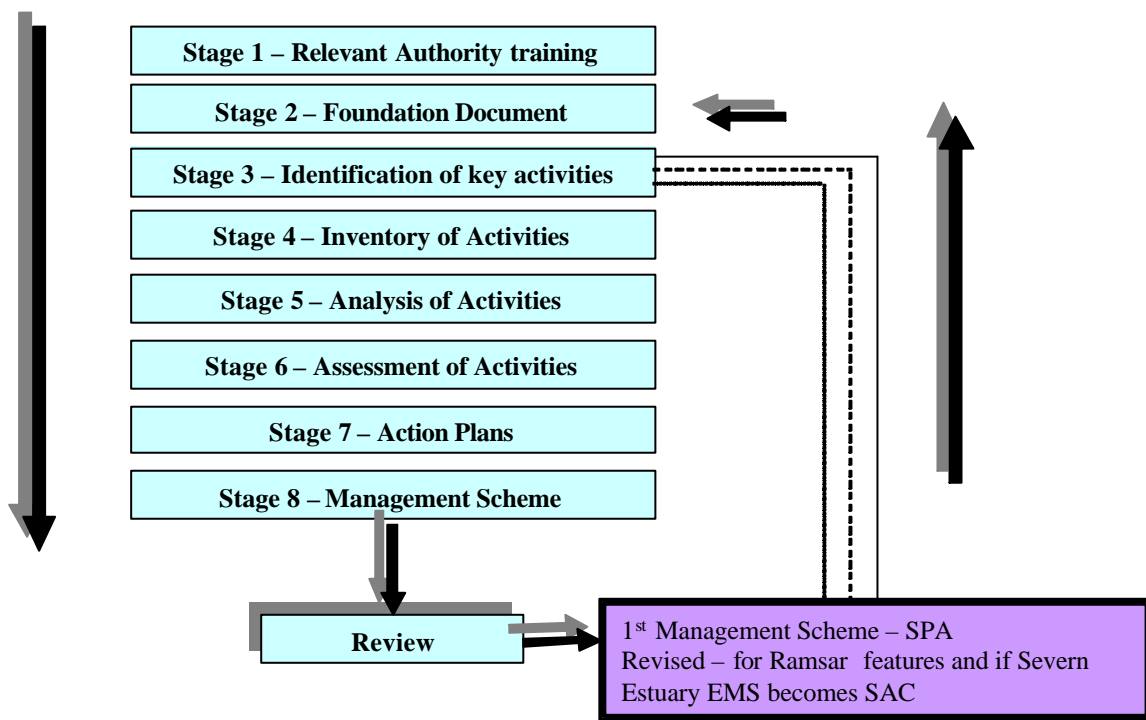
6. Assessment of activities

6.1 The Management Scheme Process

The process for developing the management scheme is fully detailed in the [Foundation Document for the Management Scheme](#) [Word 97 - to see link: right click underlined text, hyperlink, open in new window]. An updated summary of this process is shown in Figure 2.

In summary, the development of the management scheme was based around a series of three sector group workshops. Firstly, relevant authorities identified what activities they were responsible for around the Estuary (Stage 3, identification of key activities). They then provided information on where the activities occurred and how they were managed (Stage 4, Inventory of activities). A matrix hyperlinks to all of the [completed activity pro-formas](#) [Word 97 - to see link: right click underlined text, hyperlink, open in new window] that resulted from this process, and which are dated and held on the ASERA website, as are the [impacts of activity pro-formas](#) [Word 97 - to see link: right click underlined text, hyperlink, open in new window]. Finally, based on advice from the countryside agencies on which activities may cause deterioration or significant disturbance to the site features (Stage 5 & 6, analysis and assessment of activities), management actions were agreed to address the impacts of these specific activities (Stage 7, Action Plan).

Figure 2 – The Management Scheme Process



6.2 Assessment of Activities

The countryside agencies reviewed all the completed activity forms and assessed, from their perspective, the potential of an activity to cause deterioration or significant disturbance to the site (see guideline management options table 2). This assessment was based upon the sensitivity and exposure of the designated features and sub-features to the different activities in the relevant authority areas of jurisdiction. It should be noted however, that this assessment was based on information provided by relevant authorities at the time. In some instances this information was incomplete and in others there was no information provided at all. In these circumstances the assessment was based on the countryside agencies' best knowledge only. It may be that in the light of further information, certain activities in certain locations may be assessed differently. In addition, it became apparent that many of the activities initially considered by ASERA were [plans/projects](#) [Word 97 - to see link: right click underlined text, hyperlink, open in new window].

SEVERN ESTUARY EUROPEAN MARINE SITE

Management Scheme September 2004

Relevant authorities reached agreement on the assessments following further sector group workshops in May 2003 and subsequent discussions with the countryside agencies. A record of these discussions is recorded on a [‘summary of RA queries on EN/CCW advice’](#) [Word 97 - to see link: right click underlined text, hyperlink, open in new window]. [Table 1](#) indicates the agreed assessment for all of the activities for which each relevant authority is responsible.

Comments on the potential of ALL activities and plans and projects to cause deterioration or disturbance to the features of the site are summarised in the [summary impacts of activities record](#) [Word 97 - to see link: right click underlined text, hyperlink, open in new window].

6.3 Activities identified as likely to be causing deterioration or significant disturbance

The assessment identified two broad categories of activity, which at their current levels are thought likely to be causing deterioration or significant disturbance to features or sub-features on some areas of the site, namely;

- *Land based recreation*
- *Water based recreation.*

The effects of these activities are not occurring throughout the Estuary, but are thought to be in certain localised areas. Elsewhere in the Estuary, the effects of these activities, if any, may be unknown at present; i.e. generally land and water based recreation is assessed as F3 (unknown effects) and sometimes F4 (no known effect) across most of the estuary, rather than F5 (known effect) - see [Table 2](#)).

The potential impacts from land and water based recreation are disturbance to feeding, roosting and nesting birds, the potential impact of associated litter and pollution and the potential loss of habitat from recreational facilities. Access and related disturbance is the main concern and there is the need to identify more specifically where the main areas of recreational activity are around the Estuary in relation to the features and sub-features of interest. A topic group will be set up to investigate this which will include appropriate relevant authorities and members of the Advisory Group. Currently, the area under the jurisdiction of North Somerset Council, Somerset Council, Sedgemoor District Council and West Somerset District Council is considered to be a popular area for land and water based recreation and further investigation into the extent and impact of recreational activities will be concentrated in these areas. It is possible that the collection of further information and better understanding of these activities in the future may demonstrate that they are not causing deterioration or significant disturbance to the site.

6.4 Activities identified as having an unknown effect

The assessment identified the following activities as having a known mechanism to cause deterioration or significant disturbance to the features of the SPA. However, there is insufficient current information at present to determine whether or not they are actually causing deterioration or significant disturbance or not i.e. they are having an unknown effect.

- *Angling (recreational shore and boat)*
- *Boat repairs (recreational)*
- *Collection of scientific data*
- *Contamination through historic industry (Lower Axe & Lower Brue IDBs only)*
- *Grazing*
- *Highways Discharge*
- *Managing unauthorised waste*

These activities are not necessarily affecting the whole site. The timing, intensity and nature of these activities varies across the site and consequently any possible deterioration or disturbance caused by them will also vary across the site. Gathering of further information relating to these activities will help inform judgements as to their likely effects. In addition, guidance on best practice for carrying out and managing some of these activities may help to mitigate any effects they may be having.

SEVERN ESTUARY EUROPEAN MARINE SITE

Management Scheme September 2004

The above activities with a known mechanism to cause deterioration or significant disturbance, but where lack of information means their effects are unknown, together with activities that have been judged as likely to be having a significant effect on the site (see 6.3), are jointly referred to in this management scheme as activities having the 'potential' to cause deterioration or disturbance to the features and sub-features of the site.

6.5 Activities identified as not having the potential to cause deterioration or significant disturbance

Based on current best available information, all other activities are currently considered not to be causing deterioration or significant disturbance as there is no known mechanism for them to do so. These activities will require no further action subject to the continuation of current management. Where there is a change in management, or in light of further information, the impact of activities should be re-assessed (see implementation section 7.3). These activities, together with activities considered to be plans or projects, are detailed in [Appendix 4](#).

6.6 Plans and Projects

Certain plans and projects have been identified as being of an ongoing and repetitive nature. ASERA will facilitate the production of guidance notes for such plans and projects where it is felt that this will be helpful to assist relevant authorities. Currently it is proposed to produce guidance for the following:

- Archaeology (studies and protection)
- Events and festivals
- Repetitive maintenance activities
- Managing unauthorised waste, and
- Collection of scientific data.

Relevant authorities should note that the [Habitats Regulations 48-53](#) [*Word 97 - to see link: right click underlined text, hyperlink, open in new window*] apply to all plans and projects identified during the management scheme process.

6.7 Action Plans

A draft Action Plan was produced following further sector group workshops to address those activities identified in 6.3 and 6.4 above.

The Action Plan details specific actions for relevant authorities and an ASERA officer. It provides a consistent approach for addressing the activities identified as having the potential to cause deterioration or significant disturbance and that are common throughout the Estuary, following Principle 3 of the Foundation Document. However, where appropriate, it takes into account that different management actions may be adopted by different relevant authorities at some locations. The production of guidance notes for some ongoing activities and plans and projects will aid in achieving this consistent approach.

As far as possible, the Action Plan links to management policies and actions contained within other existing management plans (in accordance with Principle 4 of the Foundation Document, "links to existing management and other plans/initiatives" – see [Appendix 2](#)). This avoids duplication of effort, and emphasises the extent of existing management and the established links that already exist between relevant authorities.

**SEVERN ESTUARY EUROPEAN MARINE SITE
Management Scheme September 2004**

Table 1 - Activities and Plans/Projects

An assessment of each of the activities has been advised by the countryside agencies and generally agreed by relevant authorities at sector group workshops (May 03). This matrix summarises the assessment for each activity and for each relevant authority. This matrix should be read in conjunction with the assessment and management options table (table 2). The relevant authorities listed are not a comprehensive list of relevant authorities for the Severn Estuary European marine site, but those who have contributed consistently to the development of the management scheme.

Activity, plan/project	ABP	B/water HA	B/water IDB	Bristol City Co	B Waterways	Caldicot IDB	Cardiff Co	Cardiff HA	CCW	Dwr Cymru	EN	EA	F of Dean DC	GHT	Glos Co Co	Gordano IDB	L Axe IDB	L Brue IDB	L Severn IDB	M/mouth Co Co	Newport City Co	Newport HC	N Somerset Co	N Somerset IDB	S/moor DC	Severn Trent	Somerset Co Co	S Glos Co	SWSFC	Stockland IDB	Stroud DC	TBPC	Trinity House	V of G Co	Wessex Water	W Mendip IDB					
Agricultural run-off -				F4					F4		F4				F4					F4							F4	F4													
Airborne sports																							F1					F1													
Anchoring (commercial)	F4	F4			F4							F4		F4								F4											F4	F4							
Anchoring (recreational)	F4	F4			F4		F4					F4	F4	F4								F4	F4									F4	F4								
Angling (recreational)	F4				F3 /4		F3	F4	F3			F4								F4		F3 /4	F3 /4		F4			F3 /4	F4												
Archaeology (studies & protection)				F1			F1								F1					F1	F1		F1				F1	F1								F1					
Bait digging									F4													F4			F4																
Barrage and sluice operation			F2			F2		F1								F2	F2	F2	F1 /2				F2	F2							F2								F2		
Beach cleaning									F1														F1		F1			F1													
Boat repairs (commercial)							F4	F4				F4																F4													
Boat repairs (recreational)							F3	F3				F3											F3																		
Cable laying & maintenance																									F1			F1													
Coastal protection and flood defence improvement works				F1	F1		F1	F1				F1	F1		F1					F1	F1		F1		F1		F1	F1					F1		F1						
Coastal protection and flood defence maintenance works				F1	F1		F1	F1				F1	F1		F1					F1	F1		F1		F1		F1	F1					F1		F1						
Collection of scientific data	F4			F1	F4		F4	F3 /4	F4	F4	F4	F1	F1		F1				F3	F3					F4	F4	F3 /4					F4		F3 /4	F4						
Commercial shipping/cargo operations	F4	F4			F4																	F4												F4							
Contamination through historic industry				F1			F1			F1		F1	F1		F1		F3	F3			F1						F1	F1											F1		
Discharge/exchange of water ballast	F4	F4			F4			F4						F4																				F4							
Educational field trips					F4		F4	F2			F4	F4			F4					F4	F4				F4		F4	F4								F4	F4				
Eel and elver fishing					F1		F1		F1			F1									F1																				

SEVERN ESTUARY EUROPEAN MARINE SITE Management Scheme September 2004

Activity, plan/project	ABP	B/water HA	B/water IDB	Bristol City C	B Waterways	Caldicot IDB	Cardiff Co	Cardiff HA	CCW	Dwr Cymru	EN	EA	F of Dean DC	GHT	Glos Co Co	Gordano IDB	L Axe IDB	L Brue IDB	L Severn IDB	M/mouth CC	Newport CC	Newport HC	N Somerset Co	N Somerset IDB	S/moor DC	Severn Trent	Somerset CC	S Glos C	SW/SFC	Stockland IDB	Stroud DC	TBPC	Trinity Hse	V of G C	Wessex Water	W Mendip IDB		
Emergency planning	F1	F1		F1	F1	F1	F1	F1		F1		F1	F1	F1	F1					F1	F1	F1	F1		F1	F1	F1			F1	F1		F1	F1				
Events/Festivals	F1	F1			F1		F1	F1					F1		F1					F1	F1	F1	F1		F1									F1				
Excavation			F1			F1										F1	F1	F1	F1					F1						F1							F1	
Fishing (commercial)												F1																	F1									
Grazing					F3 /4		F3 /4		F3 /4			F3 /4			F3 /4					F3 /4			F3 /4						F3 /4									
Habitat creation and restoration				F1		F1	F1			F1		F1								F1	F1		F1		F1		F1	F1										
Highways discharge				F3			F3								F4					F3	F3		F3				F3	F3							F3			
Land based recreation				F3 /5	F3		F3 /5	F3			F3 /5	F3 /5	F3 /5		F3 /5					F3 /5	F3 /5		F3 /5		F3 /5		F3 /5	F3 /5						F3 /5		F3 /5		
Lockgate & dock water mgt.	F4				F4			F4																														
Low flying aircraft							F4																F4						F4							F4		
Maintenance dredging	F1 /3	F1 /3	F1		F1 /3			F1				F1		F1 /3		F1	F1	F1	F1			F1 /3		F1						F1		F1 /3						F1
Managing unauthorised waste				F1 or 2-5	F1 or 2-5		F1 or 2-5	F1				F1 or 2-5	F1 or 2-5		F1 or 2-5					F1 or 2-5	F1 or 2-5		F1 or 2-5					F1 or 2-5										
Moorings	F4	F4					F4							F4									F4											F4	F4	F4		
Navigation	F4	F4			F4									F4																				F4	F4			
Outfall maintenance					F1			F2		F1		F1														F1		F1						F1			F1	F1
Pipeline maintenance					F1			F2		F1																F1		F1										F1
Port waste management (of ship generated waste)	F1	F1			F1			F1																										F1				
Property & estate maintenance	F4			F4	F4		F4	F2		F4			F4		F4								F4		F4	F4		F4					F4	F4	F4	F4		
Water based recreation	F3	F4		F3	F3		F3	F4				F3		F3						F3	F3	F3	F5		F3		F3	F3						F3		F3		
Water channel maintenance			F2			F1										F2	F2	F2	F1 /2					F2														F2

SEVERN ESTUARY EUROPEAN MARINE SITE
Management Scheme September 2004

Table 2 Activity assessment and guideline management options

Code	Assessment (used by the countryside agencies to provide assessment advice on the activity pro-formas)	Guideline Management options
F1	The activity constitutes a plan or project.	<ul style="list-style-type: none"> • Apply Habs Regs 48 – 53. Maintain audit trail on decisions. • ASERA to provide framework where appropriate.
F2	<p>There is no known mechanism(s) for the activity to cause deterioration or significant disturbance to a feature(s).</p> <p>Activity is not known by the RA to have an effect in its area of jurisdiction.</p>	No action is required for activities that do not have an effect on the site, subject to the continuation of current management. Where there is a change in management, or in light of further information, the impact of the activities should be re-assessed.
F3	<p>There is a known mechanism(s) for the activity to cause deterioration or significant disturbance to a feature(s), but there is insufficient current information to determine whether or not it is causing deterioration or significant disturbance.</p> <p>Effects of activity are unknown</p>	<p>One or more of the following management options may be considered for activities with an unknown effect on the site:</p> <ol style="list-style-type: none"> a. No action, subject to the continuation of current management. Where there is a change in management, or in light of further information, the impact of the activities should be re-assessed. b. Increased monitoring of the condition of the feature/site c. Surveillance of the extent of activities d. Research to address cause and effect relationships and other relevant gaps in information e. Precautionary management measures (see e1 below for examples)
F4	<p>There is a known mechanism(s) for the activity to cause deterioration or significant disturbance to a feature(s), but no current information shows that it is causing deterioration or significant disturbance at present.</p> <p>Activity is not known by the RA to have an effect in its area of jurisdiction</p>	<p>No action is required for activities that are not known to have an effect. Where there is a change in management, or in light of further information, the impact of the activities should be re-assessed.</p> <p>Management options may be reviewed in the light of revised advice from the countryside agencies.</p>
F5	<p>There is current information to suggest that an activity is causing deterioration or significant disturbance to a feature(s) and the mechanism(s) is known.</p> <p>Activity is known by a relevant authority to be having an effect in its area of jurisdiction and a single relevant authority is responsible or has power for that activity.</p> <p>Activity is known by a relevant authority to be having an effect in its area of jurisdiction and a number of relevant authorities have powers or are responsible for that activity around the Estuary</p>	<p>For activities with a known impact on the site, action must be taken. Actions may include one or more of the following:</p> <ol style="list-style-type: none"> a. Increased monitoring of the condition of the feature/site b. Surveillance of the extent of activities c. Research to address gaps in information d. Provision of information to relevant authorities, interested parties, and the public as appropriate. e. Training of staff within relevant authorities. f. Liaison and improved communication with other relevant authorities, interested parties and the public g. Introduction of Voluntary Codes of Conduct h. Review and possibly amendment of existing management regimes/procedures i. Enforcement of byelaws j. Development and trialling of operational limits k. Zoning of activities l. No action required (further information indicates that adequate management measures are in place to avoid or minimise effects on the feature/site; or in the absence of any alternative, cost-effective management solutions).
F6	<p>There is current information to suggest that an activity is causing deterioration or significant disturbance to a feature(s), but it is outside management control (ie natural process, or there is no current mechanism for management).</p> <p>Activity is having an effect and no one has responsibility for the activity.</p>	When an activity with a known effect on the site is outside management control, relevant authorities may set-up a working/topic group of appropriate organisations and interested parties to consider possible actions (see a-l above).

SEVERN ESTUARY EUROPEAN MARINE SITE

Management Scheme September 2004

7. Implementation of Management Scheme

7.1 How the management scheme is going to be implemented

This section addresses the implementation of the management scheme as a whole. The details of specific actions arising from the activities identified as having the potential to cause deterioration or significant disturbance to the features of the Severn Estuary SPA are identified in the Action Plan in section 8.

7.2 Who is going to do what

Relevant authorities - It is the responsibility of each relevant authority to ensure it implements the management scheme as a whole and any actions identified in the Action Plan. The individual responsible relevant authority, or group of relevant authorities, have identified and will implement certain actions to address the potential effects of those activities indicated in the Action Plan. These actions were agreed at the sector group workshops using the guideline management options in Table 2 (see page 12).

In certain cases when more than one relevant authority is responsible for managing an activity with a known or unknown effect on the site, or where there are gaps in management, relevant authorities have agreed to work co-operatively to address the issues. A partnership approach will be achieved by setting up topic groups, and if appropriate, Advisory Group members or other relevant organisations may be invited to participate. Discussions will then take place to determine further possible management actions and solutions. During the implementation of the management scheme more specific management actions may be identified by individual groups of relevant authorities to address specific activities. These management actions may derive from existing procedures/initiatives, or may be specifically written for the management scheme.

It is Government policy that relevant authorities are **also** responsible for monitoring enforcement of those measures under the management scheme which fall within their functions (ie monitoring the activities for which they have responsibility). However, each relevant authority is only liable for its own powers and functions and there is no joint liability between the authorities.

ASERA – The process undertaken by ASERA has helped considerably in raising relevant authority awareness of their responsibilities in relation to the Habitats Regulations. It is anticipated that ASERA will continue to enable relevant authorities to discharge their statutory duties in relation to the nature conservation designations on the site, in the most efficient and cost effective manner, by helping facilitate the implementation of the management scheme as it has done in its development. ASERA will continue to provide a mechanism for co-operative working between those relevant authorities who wish to continue to be involved and appropriate Advisory Group members. To aid in this process, ASERA will employ an officer and administrative support, on a part-time basis. The workload of these part-time staff will be managed by a specific ASERA Working Group.

7.4 Reporting on and updating the Action Plan

The ASERA Management Group will meet at the Joint Estuary Groups bi-annual meetings organised by the Severn Estuary Partnership and relevant authorities with specific actions will report on the progress of these actions at these meetings. The implementation officer will report on progress on the Action Plan and update if necessary as part of the bi-annual reporting process.

7.5 Reporting on changes to management practices/location of activities

The Action Plan, detailed in Chapter 8, has been prepared from the information provided by the relevant authorities. If a relevant authority makes significant changes to any of their management practices, or the location or intensity of their activities change to that outlined in the initial activity pro-formas, they should inform the appropriate countryside agency. The ASERA officer will encourage all relevant authorities to undertake an annual review of their activity pro-formas. Relevant authorities will then inform ASERA of any assessment advice provided by the countryside agencies that the relevant authority would like to be incorporated into the management scheme and any amendments/additions to the Action Plan.

SEVERN ESTUARY EUROPEAN MARINE SITE

Management Scheme September 2004

7.6 Changes to plans/initiatives used to construct the management scheme

Where a particular organisation is identified as being responsible for an initiative, plan, policy, code of conduct etc and this management scheme uses that document in its construction, it is the responsibility of that organisation to inform ASERA if the document is updated or amended in any way, and inform ASERA if, and where it is held electronically. It is then the responsibility of ASERA to update the link from this management scheme. By this process, it is envisaged that the management scheme will become an integrator of plans and ensure that the single management scheme is maintained and reflects changes to all plans/policies/codes of conduct etc that it uses in its construction.

7.7 Additional activities or plans/projects

Where new activities and/or plans and projects arise, relevant and competent authorities should consult the countryside agencies for advice on possible impacts on the Severn Estuary SPA. Both the countryside agencies and ASERA will be able to provide advice as to whether the proposals should be dealt with as activities or plans and projects.

The management scheme will need to be updated to include assessments of new activities and any management actions required. This is likely to involve completing an activity form for any new activities. This process should help ensure a consistent approach to suitably manage activities to ensure compliance with the Habitats Regulations.

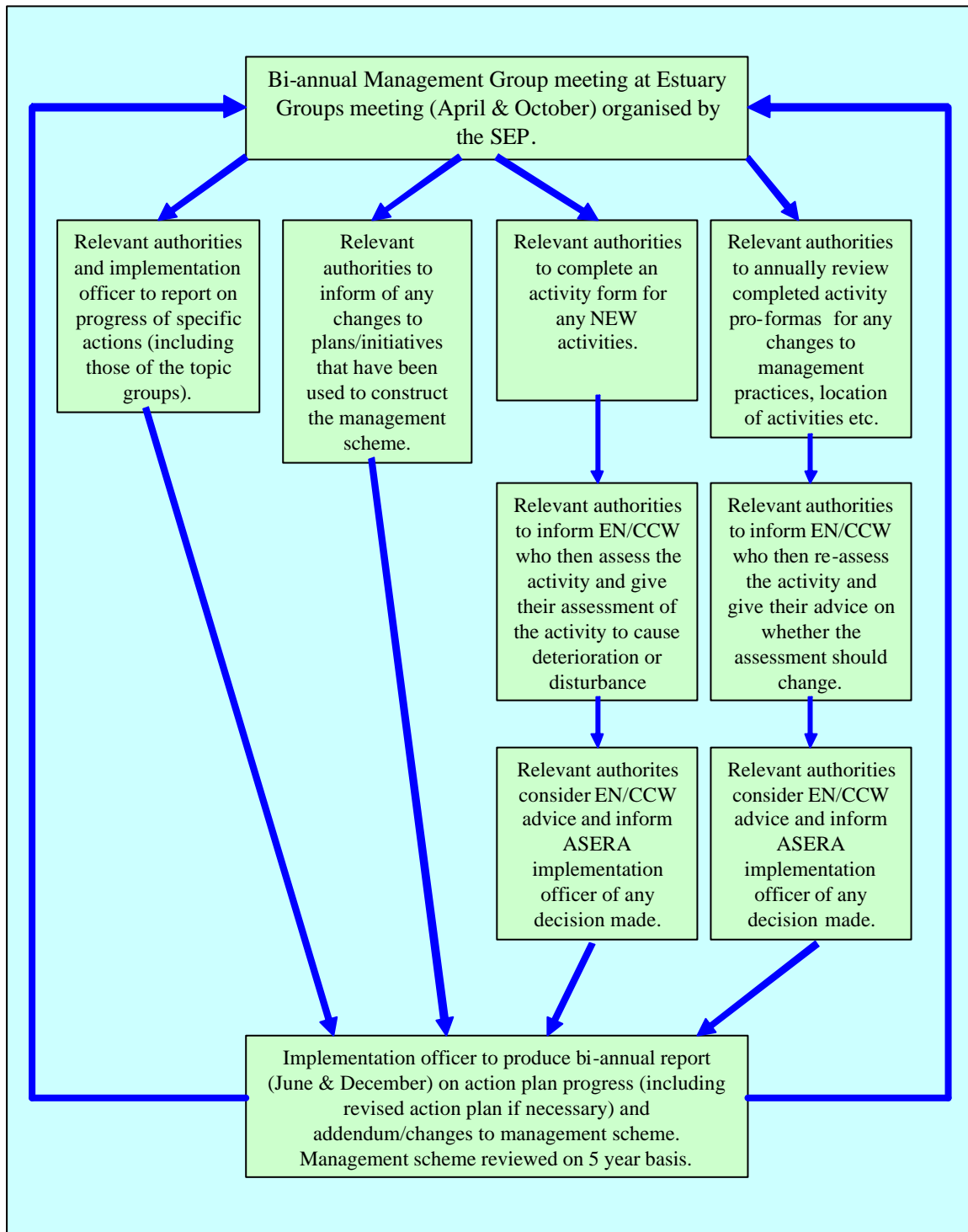
7.8 Actions for an ASERA officer

The Action Plan also includes actions to be undertaken by a management scheme implementation officer. These include co-ordinating the production of framework guidance for certain activities and plans and projects determined by the relevant authorities, servicing the ASERA Management Group, Advisory Group and topic groups, and generally raising awareness in users of the importance of the site and their impact on site features.

Figure 3 outlines the implementation process that ASERA has agreed to adopt.

SEVERN ESTUARY EUROPEAN MARINE SITE Management Scheme September 2004

Figure 3 – Implementation process



SEVERN ESTUARY EUROPEAN MARINE SITE

Management Scheme September 2004

8. Action Plan

This section of the management scheme details the actions to be undertaken by relevant authorities, either working alone or in partnership, to manage the Severn Estuary EMS.

The Action Plan provides the mechanism for relevant authorities to address the following:

- Activities identified as likely to be causing deterioration or significant disturbance to the site;
- Activities, the effects of which are unknown (ie there is insufficient information available at present to determine whether they are actually causing deterioration or significant disturbance to the site or not), and
- Certain plans and projects of an ongoing and repetitive nature for which ASERA will facilitate the production of guidance notes.

Wherever possible, the actions identified will be based on the voluntary approach in the first instance, involving widespread co-operation and consensus between organisations. In regard to Principle 6 of the Foundation Document, additional bye-laws will only be introduced when all other options have been considered and they are the only effective solution.

The [Action Plan](#) *[Word 97 - to see link: right click underlined text, hyperlink, open in new window]* is held on the ASERA website so that it can be updated without the need to update the whole of the management scheme.

SEVERN ESTUARY EUROPEAN MARINE SITE
Management Scheme September 2004

[Acronyms](#) *[to see link: right click underlined text, hyperlink, open in new window].*

[Glossary](#) *[to see link: right click underlined text, hyperlink, open in new window].*

SEVERN ESTUARY EUROPEAN MARINE SITE

Management Scheme September 2004

References

ABP Research 1999. Good practice guidelines for ports and harbours operating within or near UK European marine sites. English Nature, UK Marine SACs project.

Association of Severn Estuary Relevant Authorities 2003. Severn Estuary European marine site; Foundation Document for the management scheme.

Convention on Wetlands (Ramsar, Iran, 1971).

Council of the European Community, 1992. Directive 92/43/EEC on the Conservation of Natural Habitats and of Wild Fauna and Flora.

Council of the European Community, 1979. Directive 79/409/EEC on the Conservation of Wild Birds.

DETR/Welsh office 1998. European marine sites in England & Wales. A guide to the Conservation Regulations 1994 and to the preparation and application of management schemes.

English Nature/Countryside Council for Wales February 2004. Severn Estuary Special Protection Area (European marine site) Draft Advice given under Regulation 33 (2) of the Conservation (Natural Habitats &c.) Regulations 1994.

EN, SNH, EHS (DOE (NI)), CCW, JNCC & SAMS 1998. Natura 2000: European marine sites: Guidance relating to statutory conservation objectives and operations which may cause deterioration or disturbance.

EN, SNH, EHS (DOE (NI)), CCW, JNCC & SAMS 2001. Natura 2000: UK Marine SACs project. Indications of good practice for establishing management schemes on European marine sites – Learning from the UK Marine SACs project 1996-2001.

English Nature. May 2000. European marine sites guidance notes (EMSGN1). English Nature's criteria for commenting on European marine sites management schemes.

Fortune, F. & Quigley, M. No date. Managing the Berwickshire and North Northumberland Coast European Marine Site.

Severn Estuary Partnership 2001. Strategy for the Severn Estuary.

Solent European marine sites 2002. Foundation Document: Stage 1 towards the SEMS Management Scheme.

UK CEED 2000. A review of the effects of recreational interactions within UK European marine sites. Countryside Council for Wales (UK Marine SACs Project)

SEVERN ESTUARY EUROPEAN MARINE SITE

Management Scheme September 2004

Appendix 1 – ASERA membership (at time of print)

<p>Full contributing members</p> <ul style="list-style-type: none"> • Associated British Ports • Bridgwater Port Authority • Bristol City Council • British Waterways, Sharpness • Caldicot & Wentlooge Internal Drainage Board • Cardiff Council • Cardiff Harbour Authority • Countryside Council for Wales • Dwr Cymru Welsh Water • English Nature • Environment Agency • Forest of Dean District Council • Gloucestershire County Council • Gloucester Harbour Trustees • Lower Axe Internal Drainage Board • Lower Brue Internal Drainage Board • Lower Severn Internal Drainage Board • Monmouthshire County Council • Newport City Council • Newport Harbour Commissioners • North Somerset Council • Sedgemoor District Council • Severn Trent Water • Somerset County Council • South Gloucestershire Council • South Wales Sea Fisheries Committee • Stockland District Drainage Board • Stroud District Council • The Bristol Port Company • Trinity House Lighthouse Service • Vale of Glamorgan Council • Wessex Water • West Mendip Internal Drainage Board 	
<p>Past members not currently contributing</p> <ul style="list-style-type: none"> • North Somerset Internal Drainage Board • Cannington & Wembdon District Drainage Board • West Somerset District Council 	<p>Non-contributing relevant authorities</p> <ul style="list-style-type: none"> • Bristol Water
<p>Non-contributing relevant authorities that have provided input to the management scheme</p> <ul style="list-style-type: none"> • Bridgwater & Pawlett District Drainage Board • Gordano Valley Internal Drainage Board 	

The [ASERA constitution](#) *[to see link: right click underlined text, hyperlink, open in new window]* can be found in appendix 3 of the Foundation Document for the Severn Estuary European marine site.

SEVERN ESTUARY EUROPEAN MARINE SITE

Management Scheme September 2004

Appendix 2 – Table of links to documents/policies/plans used in constructing the management scheme and who is responsible for maintaining them

Some of the issues and actions in this management scheme are also the subject of other initiatives and plans. Although the Habitats Regulations clearly state that only one management scheme may be made for each European marine site, DETR/Welsh Office guidance advocates the use of existing plans to help construct the management schemes. This approach is defined in Principle 4 of the management scheme:

“where appropriate, the Severn Estuary European marine site management scheme will make use of management policies and actions contained within other existing management plans”

Where a particular organisation is identified as being responsible for an initiative, plan, policy or code of conduct and this management scheme uses that document in its construction, it is the responsibility of that organisation to inform ASERA if the document is updated or amended in any way, and inform ASERA if, and where it is held electronically. It is then the responsibility of ASERA to update the link from this management scheme. By this process, it is envisaged that the management scheme will become an integrator of plans and ensure that the single management scheme is maintained and reflects changes to all plans/policies/codes of conduct etc that it uses in its construction (see section 8 – Implementation of management scheme).

Organisation	Initiative/plan/policy etc (including date published)	Location in existing initiative /plan and in management scheme
ASERA	Foundation Document for the Severn Estuary European marine site (ASERA 2003)	<ul style="list-style-type: none"> • Introduction links to the role, structure and membership of ASERA found in Chapter 4 of the Foundation Document for the Management Scheme. • Purpose of this management scheme (Chapter 2) links to SPA map found in Chapter 3 of the Foundation Document for the Management Scheme. • ‘Purpose of management scheme’ (Chapter 2) links to sections 5.1 and 5.2 of the Foundation Document for the Management Scheme. • Management scheme principles section (2.1) links to section 5.3 of the Foundation Document for the Management Scheme. • Legislative background (Chapter 3) links to Chapter 2 of the ‘Foundation Document for the Management Scheme’. • Assessment of activities (Chapter 6) links to the introduction to Chapter 6 and 6.1 to 6.4 of Foundation Document for the Management Scheme. • Section 6.2 ‘assessment of activities’ links to box 4 (Chapter 2) of the Foundation Document for the Management Scheme.
ASERA (each completed pro-formas)	Completed Activity and Impact of Activity pro-formas	<ul style="list-style-type: none"> • Section 6.1 links to all completed

SEVERN ESTUARY EUROPEAN MARINE SITE
Management Scheme September 2004

is the responsibility of each relevant authority)		activity and impacts of activity proformas
ASERA	Summary of RA comments on EN/CCW advice	<ul style="list-style-type: none"> Assessment of Activities (section 6.2) links to separate spreadsheet 'summary of RA comments on EN/CCW assessment advice'
ASERA	Action Plans	<ul style="list-style-type: none"> Action Plans (Chapter 7) links to action plans on the website.
EN/CCW	Regulation 33 Advice (EN/CCW March 2004)	<ul style="list-style-type: none"> Site description and reasons for designation (Chapter 4) links to sections 1 & 2 of consultation draft Regulation 33 Advice Role of conservation objectives and advice on operations (Chapter 5) links to sections 4 & 5 of the consultation draft Regulation 33 Advice
British Waterways	Licensing conditions, bye-laws, Boat Safety Scheme	<ul style="list-style-type: none"> Management Scheme Action Plan (water based recreation) refers to this document
Cardiff Council	Communications and Promotions Plan	<ul style="list-style-type: none"> Management Scheme Action Plan (events and festivals) refers to this document
Cardiff Council	Water Use Plan	<ul style="list-style-type: none"> Management Scheme Action Plan (water based recreation) refers to this document
Cardiff Council	Cardiff Council Waste Management Plan	<ul style="list-style-type: none"> Management Scheme Action Plan (managing unauthorised waste) refers to this document
Countryside Council for Wales	Gwent Levels Wetlands Reserve Management Plan	<ul style="list-style-type: none"> Management Scheme Action Plan (angling – shore and boat recreational) refers to this document
Countryside Council for Wales	Conservation Code for Sea Anglers	<ul style="list-style-type: none"> Management Scheme Action Plan (angling – shore and boat recreational) refers to this document
Countryside Council for Wales	Sea Fisheries Policy	<ul style="list-style-type: none"> Management Scheme Action Plan (angling – shore and boat recreational) refers to this document
Countryside Council for Wales	Sporting and Challenge Events in the Countryside	<ul style="list-style-type: none"> Management Scheme Action Plan (events and festivals, Land and water based recreation) refers to this document
Countryside Council for Wales	Community Participation to Benefit the Environment - Guidelines	<ul style="list-style-type: none"> Management Scheme Action Plan (events and festivals, Land and water based recreation) refers to this document
Countryside Council for Wales	Sites of Special Scientific Interest – A guide for landowners and occupiers	<ul style="list-style-type: none"> Management Scheme Action Plan (events and festivals, Land and water based recreation) refers to this document
English Nature/Countryside Council for Wales – UK Marine SACs Project	A Review of the Effects of Recreational Interactions Within UK European Marine Sites 2002	<ul style="list-style-type: none"> Management Scheme Action Plan (land and water based recreation) refers to this document
Forest of Dean District Council	Forest of Dean Tourism Strategy 2002	<ul style="list-style-type: none"> Management Scheme Action Plan (land and water based recreation) links to this document
Forest of Dean District Council	Standard regulations for places of public entertainment 2003	<ul style="list-style-type: none"> Management Scheme Action Plan (events and festivals) links to this

**SEVERN ESTUARY EUROPEAN MARINE SITE
Management Scheme September 2004**

		document
Gloucestershire County Council	Best Value Review of PROW and Countryside Sites, Performance Improvement Plan 2003	<ul style="list-style-type: none"> • Management Scheme Action Plan (land and water based recreation) links to this document
Gloucestershire County Council	Gloucestershire Waste Local Plan	<ul style="list-style-type: none"> • Management Scheme Action Plan (managing unauthorised waste) links to this document
Gloucester Harbour Authority	Gloucester Harbour Byelaws	<ul style="list-style-type: none"> • Management Scheme Action Plan (water based recreation) links to this document
Gloucester Harbour Authority	Gloucester Harbour Management Plan Policies REC1 to REC 8	<ul style="list-style-type: none"> • Management Scheme Action Plan (water based recreation) links to this document
Gloucester Harbour Authority	Safety Guidance Notes for Small Craft Navigating in the River Severn and Severn Estuary	<ul style="list-style-type: none"> • Management Scheme Action Plan (water based recreation) links to this document
Lower Severn Drainage Board	Slimbridge Water level Management Plan	<ul style="list-style-type: none"> • Management Scheme Action Plan (maintenance dredging IDBs) refers to this document
Stroud District Council	Draft Tourism Action Plan 2003	<ul style="list-style-type: none"> • Management Scheme Action Plan (land based recreation) links to this document
Stroud District Council	Green Spaces Strategy	<ul style="list-style-type: none"> • Management Scheme Action Plan (land based recreation) links to this document
Stroud District Council	Joint Authorities Municipal Waste Management Strategy 2002	<ul style="list-style-type: none"> • Management Scheme Action Plan (managing unauthorised waste) links to this document
The Bristol Port Company	Pilotage Advice to Small Craft	<ul style="list-style-type: none"> • Management Scheme Action Plan (water based recreation) refers to this document
Vale of Glamorgan Council	Highway Maintenance Operational Manual – Chapter 8	<ul style="list-style-type: none"> • Management Scheme Action Plan (highway discharge) refers to this document
Vale of Glamorgan Council	Vale of Glamorgan Countryside Strategy 1999	<ul style="list-style-type: none"> • Management Scheme Action Plan (land based recreation) refers to this document
North Somerset Internal Drainage Board	Oldbridge River & Liddy Yeo Rhyne Catchment	<ul style="list-style-type: none"> • Management Scheme Action Plan (maintenance dredging IDBs) refers to this document

SEVERN ESTUARY EUROPEAN MARINE SITE
Management Scheme September 2004

Appendix 3 – Record of activities (i) identified as not having the potential to cause deterioration or significant disturbance to the features of the site or (ii) those now considered to be plans and projects

The table below lists those activities not currently considered to cause deterioration or significant disturbance to the designated features of the site, and those it became apparent were plans and projects. Please note that this is not a comprehensive list of plans and projects, but merely a summary of those considered by ASERA during the development of the management scheme.

Relevant authorities should ensure that they apply Habitats Regulations 48-53 for all plans and projects. However, it should be remembered that under an initial consideration, in consultation with the countryside agencies, many of the plans and projects listed below are unlikely to have a significant effect upon the designated site, and will not therefore require an appropriate assessment.

Activities identified as not having the potential to cause deterioration or significant disturbance based on EN/CCW assessment	Activities currently considered to be plans and projects (Habitats Regulations 48-53 apply)
Agricultural run-off	Airborne sports
Anchoring (commercial & recreational)	Archaeology (studies & protection)
Bait digging	Barrage and sluice operation (if part of an authorised water level management plan. EN still to confirm whether water level management plans are to be considered as plans and projects).
Barrage and sluice operation	Beach cleaning
Boat repairs (commercial)	Cable laying and maintenance
Commercial shipping/cargo operations	Coastal protection and flood defence improvement works
Discharge/exchange of water ballast	Coastal protection and flood defence maintenance works
Educational field trips	Collection of scientific data (if part of a larger development proposal)
Lockgate and dockwater management	Contamination through historic industry
Low flying aircraft	Eel and elver fishing
Moorings	Emergency planning
Navigation	Events and festivals
Property and estate maintenance	Excavation
Water channel maintenance	Fishing (commercial)
	Habitat creation and restoration
	Maintenance dredging
	Managing unauthorised waste (if 'consented' by the relevant authority)
	Outfall maintenance
	Pipeline maintenance
	Port waste management
	Water channel maintenance (if part of an authorised water level management plan. EN still to confirm whether water level management plans are to be considered as plans and projects).

SEVERN ESTUARY EUROPEAN MARINE SITE

Management Scheme September 2004

Explanation of selected activities:

Agricultural run-off

Leakage and disposal of silage effluent, slurry & sheep dip/diffuse source run-off from intensively farmed areas, and sludge spread on land.

Commercial shipping/cargo operations

Dock based cargo operations.

Contamination through historic industry

Through ownership of historic structures/buildings and associated works/waste management mechanisms where contamination could occur. Likely to be controlled by 'Contaminated Land Strategies'.

Emergency Planning

Oil, chemical, nuclear spills – prevention and clean-up (Ports, LA and water companies). Spillages from groundings also considered under this heading.

Events/festivals

Large events are considered as plans and projects. Smaller events are considered as an activity under land and water based recreation.

Excavation

Excavation works carried out by RA or on RA land, not including land claim or foreshore recharge (mostly related to IDBs activities).

Managing unauthorised waste

Includes fly-tipping and litter, but is mostly concerned with the method of collecting or managing the unauthorised waste.

Navigation

Movement of vessels or activity associated with movement and provision of safe navigation.

Property and estate management

Includes maintenance of harbour structures and dock estates, piers etc, grounds maintenance, mowing of sea defences, etc.

SEVERN ESTUARY EUROPEAN MARINE SITE
Management Scheme September 2004

Appendix 4 – Responsibilities of relevant and competent authorities *[to see link: right click underlined text, hyperlink, open in new window]* and areas of jurisdiction of relevant authorities *[to see link: right click underlined text, hyperlink, open in new window]*

**SEVERN ESTUARY EUROPEAN MARINE SITE
Management Scheme September 2004**

Appendix 5 – Membership and terms of reference for the Severn Estuary European marine site Advisory Group

**Severn Estuary EMS Advisory Group (SEAG)
Terms of Reference**

Membership and representation

The Severn Estuary EMS Advisory Group is made up of the main non Relevant Authority stakeholders and interest groups that have an effect on, or may be affected by, the European marine site management scheme. Membership is not fixed and may be reviewed. Once it is established, the proposed Severn Estuary Partnership (SEP) Forum can be used as a source of additional members, as appropriate.

Each member organisation has nominated a main representative and a deputy who possess local knowledge of the Severn Estuary and have a commitment to disseminate information through their organisation.

Those invited to form the Severn Estuary EMS Advisory Group are as follows:

Avonmouth and Severnside Responsible Care Group	Maritime Coastguard Agency
Bristol Channel Federation of Sea Anglers	Marine Conservation Society
Bristol Channel Yachting Conference	National Farmers Union
British Association of Shooting and Conservation	Ramblers Association
British Horse Society	Royal Yachting Association
British Marine Aggregates Producers Association	RSPB
Bristol University	Severn Estuary Conservation Group
British Marine Federation	Severn Estuary Levels Research Group
Burnham Water Users Forum	Severn Estuary Net & Fixed Engines Fisherman's Association
Cardiff University	Severn Estuary Partnership
Country Landowners & Business Association	Sports Council for Wales
Council for the Protection of Rural England	Sport England
Council for the Protection of Rural Wales	Tourism South West
Crown Estate	Wales Royal Yachting Association
Farmers Union Wales	Wales Tourist Board
Gloucester Harbour Users Forum	
Gloucester & Sharpness Canal Users Forum	

Purpose

The primary purpose of the Advisory Group is to advise the ASERA Management Group, initially on developing, and then on the implementation of the Severn Estuary EMS management scheme(s), including providing technical comments and advice on monitoring aspects of the scheme. The Advisory Group will help to ensure that member organisations are fully briefed on the management scheme as it evolves, encourage the provision of relevant information for the scheme, and encourage feedback to the Management Group on key issues and aspects of the scheme as it is prepared and implemented. In addition, the Advisory Group should consider other issues outwith the development and implementation of the management scheme, but that still relate to the Severn Estuary European marine site.

The Advisory Group will also aid wider dissemination of information about the management scheme. Representatives will be responsible for cascading information within their organisation, and where necessary, within their sector of interest, using existing organisational structures as far as possible.

Chair

The Severn Estuary EMS Advisory Group will elect its own Chair and Vice Chair every year from among its membership.

SEVERN ESTUARY EUROPEAN MARINE SITE

Management Scheme September 2004

Administration

The ASERA Technical Officer will convene Advisory Group meetings and prepare and circulate agendas and minutes. However, papers required specifically for the Advisory Group must be prepared by its member organisations. The Chair or Vice Chair of the Advisory Group will be invited to attend Management Group meetings.

Frequency of meetings

The Advisory Group will meet at key stages in the process of producing the management scheme and at such times considered necessary by the majority of members. Meetings to be organised to precede Management Group meetings.

Public record

Minutes of Advisory Group meetings must be considered at the next Management Group meeting and must be available to the general public, e.g. by placing them on the ASERA website.

SEVERN ESTUARY EUROPEAN MARINE SITE
Management Scheme September 2004

Appendix 6 – Main plans and initiatives in and around the Severn Estuary

Plan title	Date published	Lead body
Associated British Ports Oil Spill Contingency Plan	2000	ABP
Bridgwater to Bideford Bay Shoreline Management Plan	1998	North Devon & Somerset Coastal Group
Avon Biodiversity Action Plan	2004	Avon local authorities
Bristol Channel Counter Pollution Plan	In preparation	Bristol Channel Counter Pollution Association
Bristol Channel Environmental Sensitivity Analysis	2002	Bristol Channel Counter Pollution Association
Cardiff Bay Oil Pollution Plan	2002	Cardiff Bay Harbour Authority/Cardiff Council
Cardiff Unitary Development Plan	In preparation	Cardiff Council
Cardiff Countryside Strategy	1998	Cardiff Council
Cardiff Local Biodiversity Action Plan	2001	Cardiff Council
Cardiff Local Sustainability Strategy	2000	Cardiff Council
Coastal Habitat Management Plan – Severn Estuary	In progress	Environment Agency
Flat Holm Island Management Plan	In preparation	Cardiff Council
Forest of Dean District Local Plan	2001	Forest of Dean District Council
Gloucester Harbour Management Plan	2003	Gloucester Harbour Trustees
Gloucester Harbour Emergency Procedures	2003	Gloucester Harbour Trustees
Gloucester Harbour Oil Spill Contingency Plan	2004	Gloucester Harbour Trustees
Gloucestershire County Council Structure Plan	1999	Gloucestershire County Council
Gloucestershire Minerals Local Plan 1997-2006	Revised draft deposit	Gloucestershire County Council
Gloucestershire Waste Local Plan 2002-2012	Revised draft deposit	Gloucestershire County Council
Gloucestershire County Biodiversity Action Plan	2000	Gloucestershire Biodiversity Steering Group
Gloucestershire Coastal Pollution Hazards Guide and Response Plan	2003	Gloucestershire County Council
Gwent Levels Foreshore Management Plan	2000	Environment Agency
Joint Replacement Structure Plan (former Avon area)	In preparation	South Gloucestershire Co Co, Bristol City Council, North Somerset Council
Local Environment Agency Plan Taff Area	1998	Environment Agency
Local Environment Agency Plan Eastern Valleys Area	1998	Environment Agency
Local Environment Agency Plan Wye Area	1998	Environment Agency
Local Environment Agency Plan Severn Vale	2000	Environment Agency
Local Environment Agency Plan Ely & Vale of Glamorgan	2000	Environment Agency
Local Environment Agency Plan North Somerset Rivers	1998	Environment Agency
Local Environment Agency Plan Brue & Axe	1998	Environment Agency
Local Environment Agency Plan River Tone	2000	Environment Agency
Local Environment Agency Plan West Somerset Rivers	1999	Environment Agency
Local Environment Agency Plan Bristol Avon	2000	Environment Agency
Marine Aggregate Dredging Policy South Wales	2001	WAG
Monmouthshire County Council Unitary Development Plan	In preparation	Monmouthshire County Council

**SEVERN ESTUARY EUROPEAN MARINE SITE
Management Scheme September 2004**

Monmouthshire Biodiversity Action Plan	In preparation	Monmouthshire County Council
Newport City Council Unitary Development Plan	In preparation	Newport City Council
Newport County Biodiversity Action Plan	2002	Newport City Council
Newport Harbour Commissioners Oil Spill Contingency Plan	2000	Newport Harbour Commissioners
North Somerset Biodiversity Action Plan	2000	North Somerset Council
North Somerset Waste Local Plan	2001	North Somerset Council
Port of Bridgwater Marine Operations Plan	2004	Port of Bridgwater/Sedgemoor DC
Port of Bridgwater Waste Management Plan	1997	Port of Bridgwater/Sedgemoor DC
Port of Bridgwater, Watchet and Minehead Harbours Oil Spill Contingency Plan	2000	Port of Bridgwater/Sedgemoor DC
Port of Gloucester Waste Management Plan	1998	British Waterways
River Parret Catchment Flood Management Strategy	2001	Somerset County Council
Sedgemoor Development Plan	2001	Sedgemoor District Council
Sedgemoor District Biodiversity Action Plan	1998	Sedgemoor District Council
Severn Estuary Shoreline Management Plan – Phase 1	2001	Severn Estuary Coastal Group
Severn Estuary Shoreline management plan – Phase 2	In progress	Severn Estuary Coastal Group
Sharpness Dock - Port Operations Manual (Includes Emergency Procedures)	2002	British Waterways
Sharpness Dock Oil Spill Contingency Plan	Revision due 2004	British Waterways
Site Characterisation of the South West European Marine Sites – Severn Estuary pSAC, SPA	2003	Environment Agency, English Nature and the Countryside Council for Wales
South East Wales Regional Tourism Strategy	1999	South East Wales Economic Forum
South Gloucestershire Revised Deposit Draft Local Plan	2004	South Gloucestershire Council
Somerset & Exmoor National Park Joint Structure Plan Review to 2011	2000	Somerset County Council
Strategic Planning Guidance for South East Wales (Vols 1 & 2)	Vol 1 – 2000 Vol2 – in preparation	SE Wales Strategic Planning group
Strategy for the Severn Estuary	2001	Severn Estuary Partnership
Stroud District Local Plan	2001	Stroud District Council
The Bristol Port Company Waste Management Plan	2001	The Bristol Port Company
The Bristol Port Company Oil Spill Contingency Plan	2000	The Bristol Port Company
The Bristol Port Company Emergency Plan	2002	The Bristol Port Company
The Bristol Port Company Marine Operations Procedures	2002	The Bristol Port Company
Royal Portbury Dock Wildlife Management Plan	1992 (ongoing)	The Bristol Port Company
Towards 2020, A Tourism Strategy for the South West	1999	West Country Tourist Board
Vale of Glamorgan Unitary Development Plan	In preparation	Vale of Glamorgan Council
Vale of Glamorgan Local Biodiversity Action Plan	2002	Vale of Glamorgan Council
West Somerset Development Plan	??	West Somerset District Council
West Somerset District Biodiversity Action Plan	1999	West Somerset District Council

SEVERN ESTUARY EUROPEAN MARINE SITE

Management Scheme September 2004

Appendix 7 – Other issues to be considered in the management scheme

There are a few issues that have been raised during the production of the management scheme that have still to be considered and will therefore be addressed during the implementation stage of the process. These include:

- Use of hovercraft;
- Military rifle ranges;
- Clay pigeon shooting close to the estuary.

**SEVERN ESTUARY EUROPEAN MARINE SITE
Management Scheme September 2004**

Appendix 8 – Other [Special Protection Areas](#) and [Special Areas of Conservation](#) in the UK